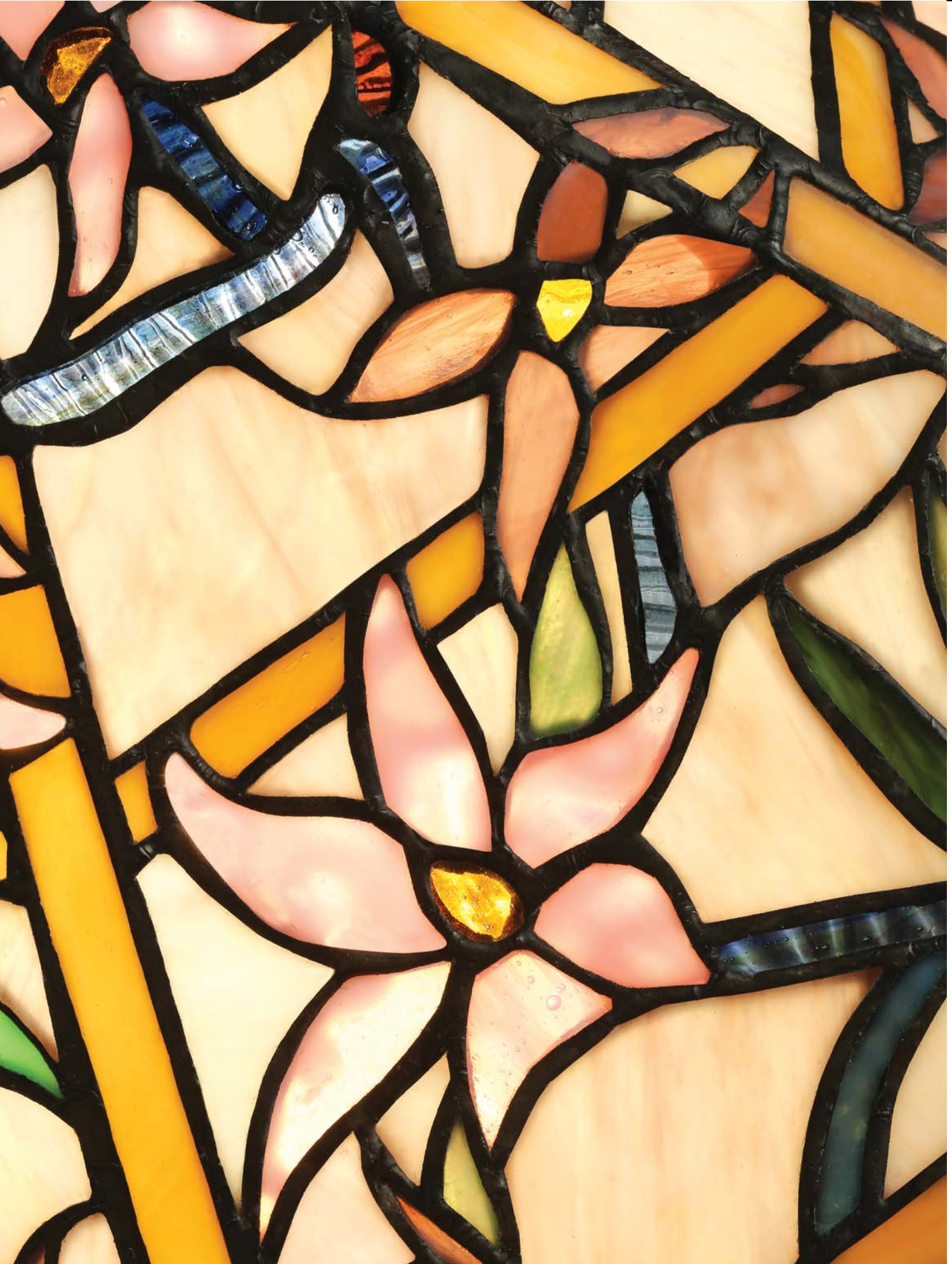


Masterpieces of design & decorative lighting

# *Tiffany* Collection

*Interiors*  
1900



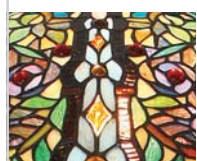
Spring 2015



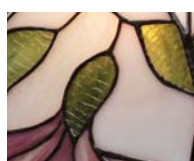
# Tiffany Collections

Art Deco	Art Deco designs using Tiffany techniques	pg 5-19
Mackintosh	Designs inspired by Charles Rene Mackintosh	pg 20-27
Art Nouveau	Fresh Art Nouveau designs	pg 28-37
Classic	Geometric designs drawing on timeless classics	pg 38-39
Studio	Highest quality reproductions and complex designs	pg 40-49
Traditional	Traditional foral styles	pg 50-76
Mega Pendants	Extra large pendants	pg 77-79
Mirrors	Mirror designs using Tiffany techniques	pg 80-83

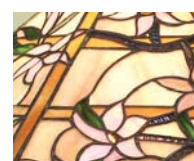
## Index



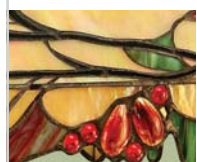
Anderson  
p45



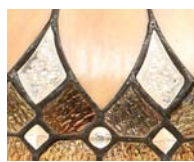
Botanica  
p69



Clematis  
p52-53



Arbois  
p49



Brooklyn  
p5-7



Country Border  
p56-57



Ashtead  
p54-55



Butterfly  
p51



Damsel selfy  
p23



Ashton  
p28-29



Chanin  
p26



Dark Star  
p14-15



Astoria  
p10-11



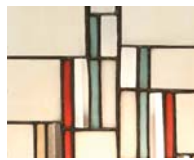
Chatelet  
p32



Dauphine  
p30



Bernwood  
p66-67



Chicago  
p12



Diana  
p62-63

# Index



Beige Dragonfly  
p76



Blue Dragonfly  
p74-75



Flame Dragonfly  
p72-73



Green Dragonfly  
p40-41



Red Dragonfly  
p42-43



Eden  
p50



Fargo  
p18-19



Fleurette  
p48



Flowering Lotus  
p4



Hector  
p34



Helensburgh  
p26



Hutchinson  
p20-21



Ingram  
p27



Jamelia  
p36-37



Josette  
p69



Keppie  
p22



Kichiri  
p58-59



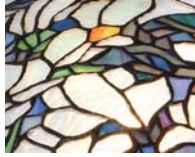
Lelani  
p64-65



Lloyd  
p8-9



Lyon  
p33



Magnolia  
p44



Mega Pendants  
p77-79



Metropolitan  
p13



Mille Feux  
p39



Mini Lamps  
p70-71



Mirrors  
p80-83



Nevada  
p16



Odeon  
p17



Pearl  
p38



Prairie  
p35



Red Lilies  
p68



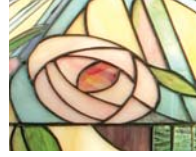
Ruban  
p31



Sullivan  
p46-47



Vesta  
p60-61



Willow  
p24-25

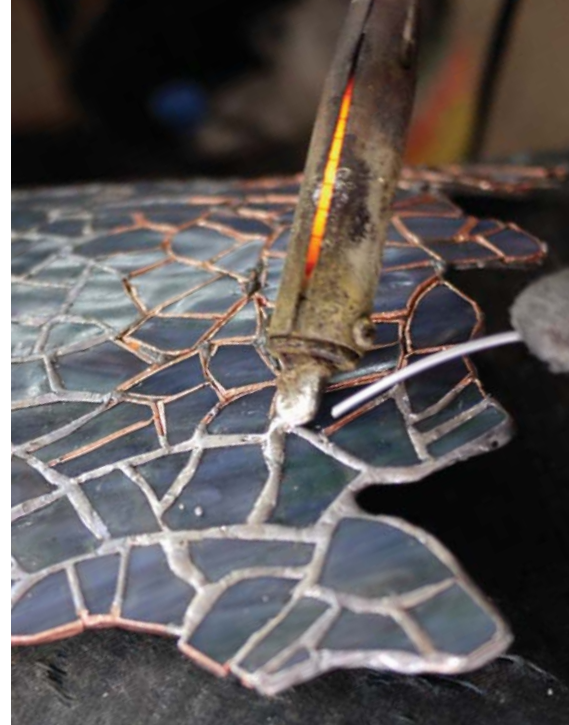


# Interiors 1900 Tiffany

*A commitment to quality & design*

As an industrial designer, Louis Tiffany's aim was to produce art for the home. He was an industrious experimenter whose studios developed many ideas. These include the copper foil technique to combine different colours of stained glass seen on all today's Tiffany lamps.

Continuing in Tiffany's tradition, Interiors 1900 employs designers to create new ideas every year concentrating on themes such as Art Deco, Art Nouveau, American 'Mission' as well as traditional and contemporary styles. Research of the latest colours ensures they are available to suit most interior schemes.



*Soldering of the lampshades*



*Typical set of glass for our Tiffany lamps*

Each shade starts out as an artist's drawing. A prototype is built which is used to make a plaster impression of the shade. This becomes a "mould" to lay out glass during production.

Each lamp uses a variety of different glasses. Glass colours are mixed when molten to give a marbling effect, different chemicals are added to give different amounts of opacity, and finally the glass passed through a set of textured rollers. Research of the latest trends ensures colours are available to suit most interiors.

Glass is chosen over a lamp to see how the end result will be lit and unlit. Each piece is carefully cut by hand and checked. Pieces are ground to remove sharp edges and copper foil is wrapped around each edge. These pieces are placed onto the mould and soldered like a 3D jigsaw. Extra care is taken by building the shade in stages to ensure the pattern remains perfect. Once all the glass pieces are in place, the shade is taken from the mould and soldered again on the outside to add strength and create an attractive finish. The lampshade is washed and dipped in a chemical bath to patinate the bright solder to an antique finish.

Production is monitored at every step so any problems can be rectified immediately. Finally, each shade is given a thorough check over a lamp to ensure the pattern is correct, all soldering is of the highest quality and every piece of glass is in perfect condition.

Shades may contain hundreds of pieces of individual glass. To cut, foil, solder and finish each shade takes many man hours to complete! Our commitment to quality unfortunately comes at a price, but we hope that our lamps can be enjoyed for years to come and become future heirlooms.



## FLOWERING LOTUS A

Medium Table Lamp

H (mm) 600  
W (mm) 340  
Watts 1 x 60 E27  
Shade TP9  
Fitting DB900M/VG



# Tiffany Art Deco

Striking and exclusive designs are featured in the Interiors 1900 Art Deco collection. By combining strong Art Deco forms with modernist elements and neutral colours, these lighting ranges work well in both modern and traditional settings.



A

**A** BROOKLYN  
Table Lamp  
with Aluminium Base

H (mm) 540  
W (mm) 400  
Watts 2 x 60 E27  
Shade T048SH40  
Fitting AL054L

**B** BROOKLYN  
Table Lamp  
with Solid Brass Base

H (mm) 540  
W (mm) 400  
Watts 2 x 60 E27  
Shade T048SH40  
Fitting BR054L

Superb quality cast brass base with a deep antique patina and subtle highlights. Code: BR054L



B





**C** BROOKLYN  
Large Inverted Pendant

H (mm)	ADJ 420 - 620
W (mm)	500
Watts	3 x 60 E27
Shade	T048SH50
Fitting	SU3C/ADJ



**D** BROOKLYN  
Flush Ceiling Light

H (mm)	220
W (mm)	500
Watts	2 x 60 E27
Shade	T048SH50
Fitting	FL1

Brooklyn...a classic art deco style combining sleek lines with textured glass



**E** BROOKLYN  
Floor Lamp

H (mm)	1560
W (mm)	500
Watts	2 x 60 E27
Shade	T048SH50
Fitting	DK1F



**F** BROOKLYN  
Pendant

H (mm)	ADJ 450 - 1350
W (mm)	400
Watts	1 x 60 E27
Shade	T048SH40
Fitting	SU02

**G** BROOKLYN  
Table Lamp

H (mm)	530
W (mm)	400
Watts	2 x 60 E27
Shade	T048SH40
Fitting	DK1M

**H** BROOKLYN  
Wall Light

H (mm)	335
W (mm)	150
D (mm)	185
Watts	1 x 40 E14
Shade	T048W
Fitting	WF1





I

**BROOKLYN**  
Semi Flush Ceiling Light

OPTIONS & SIZES	S	M	L
Pendant		•	•
Inverted Pendant		•	•
Flush		•	•
Semi-Flush		•	•

H (mm) 350  
W (mm) 400  
Watts 3 x 60 E27  
Shade T048SH40  
Fitting SF01



J

**BROOKLYN**  
Large Lantern

H (mm) ADJ 610 - 1070  
W (mm) 250  
Watts 1 x 60 E27  
Shade TLAN2  
Fitting LF1TL



K

**BROOKLYN**  
Small Lantern

H (mm) ADJ 420 - 1300  
W (mm) 150  
Watts 1 x 40 E14  
Shade TLAN1  
Fitting LF1TS







A

Lloyd...in the spirit of American designer Frank Lloyd Wright. Created using bevelled glass to really catch the light



Solid brass base

**LLOYD**

Pendant

H (mm) ADJ 440-1400  
 W (mm) 410  
 Watts 1 x 60 E27  
 Shade T044SH40  
 Fitting SU02

OPTIONS & SIZES	S	M	L
Pendant	•	•	•
Inverted Pendant	•	•	•
Flush	•	•	•
Semi-Flush	•	•	•

A



B

**LLOYD**

Medium Table Lamp  
 with Solid Brass Base

H (mm) 550  
 W (mm) 410  
 Watts 2 x 60 E27  
 Shade T044SH40  
 Fitting BR133M

B



C

LLOYD  
Wall Light

H (mm)	210
W (mm)	310
D (mm)	110
Watts	1 x 40 E14
Shade	T044W
Fitting	WF1

C



D

LLOYD  
Medium Table Lamp  
with Aluminium Base

H (mm)	550
W (mm)	410
Watts	2 x 60 E27
Shade	T044SH40
Fitting	AL133M

D





Astoria...dynamic lines, ideal for the art deco connoisseur



A

**A** ASTORIA  
Flush Ceiling Light

H (mm) 200  
W (mm) 480  
Watts 2 x 40 E14  
Shade T026FL48  
Fitting FL1

OPTIONS & SIZES	S	M	L
Pendant		●	●
Inverted Pendant		●	●
Flush	●	●	●
Semi-Flush	●	●	●



D

**D** ASTORIA  
Uplighter

H (mm) 1640  
W (mm) 400  
Watts 1 x 60 E27  
Shade T026SH40  
Fitting TG08BU

Art Deco collection



E

**E** ASTORIA  
Large Mirror

H (mm) 700  
W (mm) 570  
Code T026ML  
For wall hanging only

**F** ASTORIA  
Small Mirror

H (mm) 300  
W (mm) 230  
Code T026MS  
Can be hung on a wall  
or desk mounted



F



B

**B** ASTORIA  
Large Inverted Pendant

H (mm) ADJ 350-680  
W (mm) 480  
Watts 3 x 60 E27  
Shade T026FL48  
Fitting SU3C/ADJ

**C** ASTORIA  
Pendant

H (mm) ADJ 460-1430  
W (mm) 400  
Watts 1 x 60 E27  
Shade T026SH40  
Fitting SU02



C

### ASTORIA

Wall Light

H (mm) 260  
W (mm) 300  
D (mm) 140  
Watts 1 x 40 E14  
Shade T026W  
Fitting WF1

G

### ASTORIA

Medium Table Lamp

H (mm) 580  
W (mm) 400  
Watts 2 x 60 E27  
Shade T026SH40  
Fitting TG08TB

H

### ASTORIA

Floor Lamp

H (mm) 1560  
W (mm) 480  
Watts 2 x 60 E27  
Shade T026FL48  
Fitting TG08FB

I





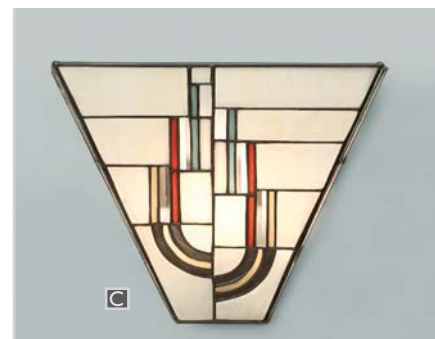
Chicago...a contemporary design inspired by the age of decadence.



**B** CHICAGO  
Pendant

H (mm) ADJ 440-1400  
W (mm) 410  
Watts 1 x 60 E27  
Shade T031SH40  
Fitting SU02

OPTIONS & SIZES	S	M	L
Pendant	•	•	•
Inverted Pendant	•	•	•
Flush	•	•	•
Semi-Flush	•	•	•



**C** CHICAGO  
Wall Light

H (mm) 220  
W (mm) 270  
D (mm) 145  
Watts 1 x 40 E14  
Shade T031W  
Fitting WF1



**D** CHICAGO  
Medium Table Lamp  
with Aluminium Base

H (mm) 550  
W (mm) 410  
Watts 2 x 60 E27  
Shade T031SH40  
Fitting AL133M

**A** CHICAGO  
Medium Table Lamp  
H (mm) 550  
W (mm) 410  
Watts 2 x 60 E27  
Shade T031SH40  
Fitting DB133M



A



B

**B METROPOLITAN**  
Small Table Lamp

H (mm) 380  
W (mm) 250  
Watts 1 x 40 E14  
Shade TM25S  
Fitting DB133S (AB finish)  
Fitting AL133S (Aluminium)

**A METROPOLITAN**  
Medium Table Lamp  
with Aluminium Base

H (mm) 550  
W (mm) 420  
Watts 2 x 60 E27  
Shade TM25M  
Fitting DB133M (AB finish)  
Fitting AL133M (Aluminium)



C

**C METROPOLITAN**  
Wall Light

H (mm) 240  
W (mm) 300  
D (mm) 140  
Watts 1 x 40 E14  
Shade TM25W  
Fitting WF1



D

**D METROPOLITAN**  
Lantern

H (mm) ADJ 540 - 1490  
W (mm) 160  
Watts 1 x 60 E27  
Shade LM25  
Fitting SULA



E

**E METROPOLITAN**  
Pendant

H (mm) 550  
W (mm) 420  
Watts 1 x 60 E27  
Shade TM25M  
Fitting SU02

OPTIONS & SIZES	S	M	L
Pendant		•	
Inverted Pendant		•	
Flush	•		
Semi-Flush		•	





A

**A DARK STAR**  
Semi Flush Ceiling Light

H (mm) 340  
W (mm) 490  
D (mm) 140  
Watts 3 x 60 E27  
Shade TG08SH  
Fitting SF01

OPTIONS & SIZES	S	M	L
Pendant		•	
Inverted Pendant		•	
Flush		•	
Semi-Flush		•	



B

**B DARK STAR**  
Wall Light

H (mm) 210  
W (mm) 380  
D (mm) 140  
Watts 1 x 40 E14  
Shade TG08W  
Fitting WF1

**C DARK STAR**  
Small Table Lamp

H (mm) 400  
W (mm) 200  
Watts 1 x 40 E14  
Shade TG08SHS  
Fitting TG08TSB



C

Dark Star...a symbolic design in iridescent black and contrasting background of pearly creams



D

**D DARK STAR**  
Floor Lamp

H (mm) 1560  
W(mm) 490  
Watts 2 x 60 E27  
Shade TG08SH  
Fitting TG08FB



E

**E DARK STAR**  
Uplighter Floor Lamp

H (mm) 1755  
W(mm) 420  
Watts 1 x 60 E27  
Shade TG08SHUL  
Fitting TG08BU





**DARK STAR**  
Table Lamp

F

H (mm) 560  
W (mm) 490  
Watts 2 x 60 E27  
Shade TG08SH  
Fitting TG08TB



F





A



B



D



C

**D NEVADA**  
Flush Ceiling Light

H (mm) 160  
W (mm) 400  
Watts 2 x 60 E27  
Shade TM16/FL  
Fitting FL1

**E NEVADA**  
Small Lamp

H (mm) 380  
W (mm) 280  
Watts 1 x 40 E14  
Shade TM16/S  
Fitting DB575/S



E

**A NEVADA**  
Pendant

H (mm) ADJ 410 - 1280  
W (mm) 350  
Watts 1 x 60 E27  
Shade TM16/L  
Fitting SU02

OPTIONS & SIZES	S	M	L
Pendant	•	•	•
Inverted Pendant	•	•	•
Flush	•	•	•
Semi-Flush	•	•	•

**B NEVADA**  
Wall Light

H (mm) 220  
W (mm) 360  
D (mm) 140  
Watts 1 x 40 E14  
Shade TM16/W  
Fitting WF1

**C NEVADA**  
Large Table Lamp

H (mm) 550  
W (mm) 350  
Watts 2 x 60 E27  
Shade TM16/L  
Fitting DB575M

Odeon...a theatrical design making an Art Deco statement in vivid American art glass

**ODEON**

**A**

Pendant

OPTIONS & SIZES	S	M	L
Pendant	•	•	•
Inverted Pendant	•	•	•
Flush	•	•	•
Semi-Flush	•	•	•

H (mm) ADJ 440 - 1560  
 W (mm) 390  
 Watts 1 x 60 E27  
 Shade TV150SHM  
 Fitting SU02

**ODEON**

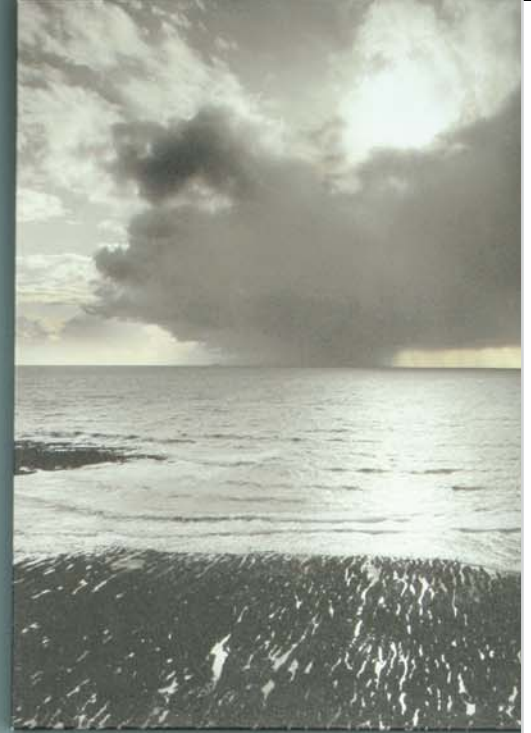
**B**

Table Lamp

H (mm) 570  
 W (mm) 390  
 Watts 1 x 60 E27  
 Shade TV150SHM  
 Fitting DB132L1



**A**



**B**

Art Deco collection

*Interiors*  
1900



Fargo...a clean line and subtle colour  
in elegant classic design



A

**A FARGO**  
Flush Ceiling Light  
H (mm) 170  
W (mm) 415  
Watts 2 x 60 E27  
Shade T004SH40  
Fitting FL1



**B FARGO**  
Large Pendant  
H (mm) ADJ 455 - 1490  
W (mm) 500  
Watts 1 x 60 E27  
Shade T004SH50  
Fitting SU02

OPTIONS & SIZES	S	M	L
Pendant	•	•	•
Inverted Pendant	•	•	•
Flush	•	•	•
Semi-Flush	•	•	•

**C FARGO**  
Inverted Pendant  
H (mm) 900  
W (mm) 415  
Watts 3 x 60 E27  
Shade T004SH40  
Fitting SU3FC

Art Deco collection



C

**FARGO** D  
Floor Lamp

H (mm) 1670  
W (mm) 500  
Watts 2 x 60 E27  
Shade T004SH50  
Fitting FL420

**FARGO** E  
Table Lamp

H (mm) 580  
W (mm) 415  
Watts 2 x 60 E27  
Shade T004SH40  
Fitting DB420

**FARGO** F  
Wall Light

H (mm) 175  
W (mm) 313  
D (mm) 150  
Watts 1 x 40 E14  
Shade T004W  
Fitting WF1



D

F

E



# Tiffany Mackintosh

Designs inspired by one of Scotland's most creative talents, the Glaswegian designer Charles Rennie Mackintosh.



A

**A HUTCHINSON**  
Inverted Pendant

H (mm) 900  
W (mm) 500  
Watts 3 x 60 E27  
Shade T049SH50  
Fitting SU3FC

OPTIONS & SIZES	S	M	L
Pendant		•	•
Inverted Pendant		•	•
Flush		•	•
Semi-Flush		•	•

**B HUTCHINSON**  
Flush Ceiling Light

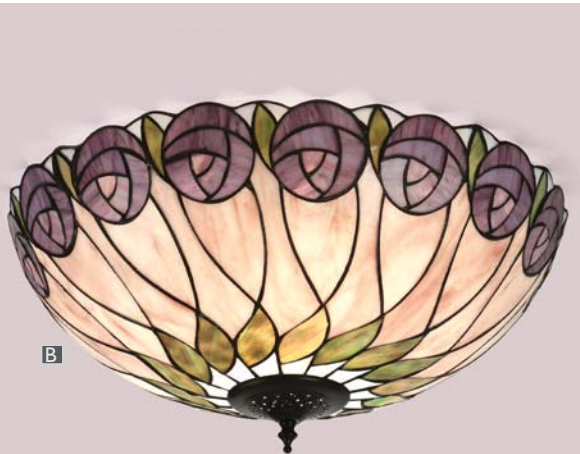
H (mm) 220  
W (mm) 500  
Watts 2 x 60 E27  
Shade T049SH50  
Fitting FL1



C

**C HUTCHINSON**  
Floor Lamp

H (mm) 1640  
W (mm) 500  
Watts 2 x 60 E27  
Shade T049SH50  
Fitting T046FB



B

**HUTCHINSON D**  
Pendant

H (mm) ADJ 550 - 1390  
W (mm) 400  
Watts 1 x 60 E27  
Shade T049SH40  
Fitting SU02



D

**HUTCHINSON**

## Inverted Pendant

H (mm)	ADJ 370 - 630
W (mm)	400
Watts	3 x 60 E27
Shade	T049SH40
Fitting	SU3C/ADJ

**E****HUTCHINSON**

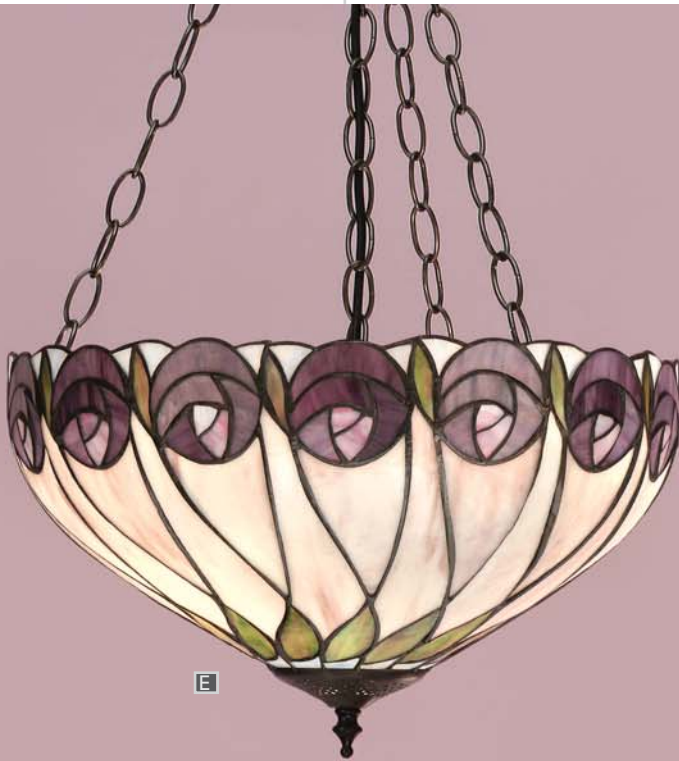
## Table Lamp

H (mm)	620
W (mm)	400
Watts	2 x 60 E27
Shade	T049SH40
Fitting	T046TB

**F****HUTCHINSON**

## Wall Light

H (mm)	335
W (mm)	150
D (mm)	185
Watts	1 x 40 E14
Shade	T049W
Fitting	WF1

**G****E****G****F**



# Keppie...a classic Mackintosh style

OPTIONS & SIZES	S	M	L
Pendant	●	●	●
Inverted Pendant	●	●	●
Flush	●	●	●
Semi-Flush	●	●	●



A

**A** KEPPIE  
Semi Flush Ceiling Light

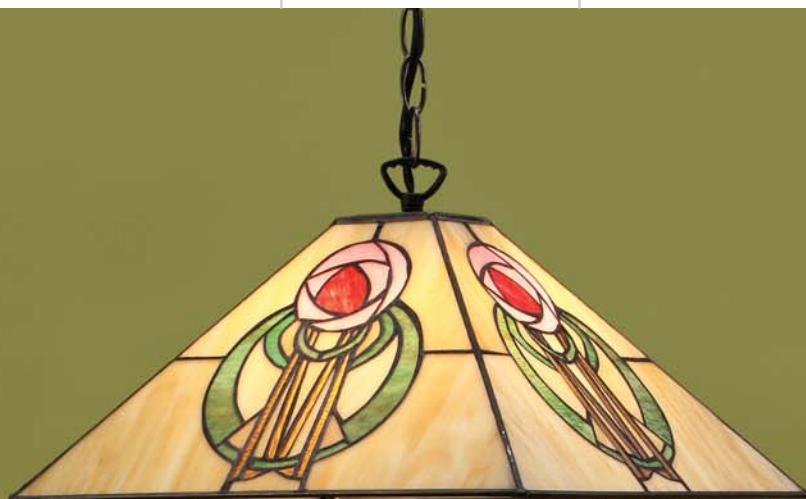
H (mm) 330  
W (mm) 350  
Watts 2 x 60 E27  
Shade T018SH35  
Fitting SFSQ

**B** KEPPIE  
Medium Table Lamp

H (mm) 540  
W (mm) 350  
Watts 2 x 60 E27  
Shade T018SH35  
Fitting TB20M

**C** KEPPIE  
Medium Pendant

H (mm) ADJ 465 - 1500  
W (mm) 350  
Watts 1 x 60 E27  
Shade T018SH35  
Fitting SU02



C



B



Mackintosh collection

Damselfly...organic flowing lines with a damselfly theme

OPTIONS & SIZES	S	M	L
Pendant	•		
Inverted Pendant	•		
Flush	•		
Semi-Flush	•		

**DAMSEFLY**  
Pendant

H (mm) 550-1390  
W (mm) 400  
Watts 1 x 60 E27  
Shade T050SH40  
Fitting SU02

**A**

**DAMSEFLY**  
Table Lamp  
with Solid Brass Base

H (mm) 550  
W (mm) 400  
Watts 2 x 60 E27  
Shade T050SH40  
Fitting BR133M

**B**



**A**



**B**



WILLOW...stylish rose typical of Mackintosh designs are highlighted in subtle colours to match your interior



A



B

**B** WILLOW

Small Table Lamp

H (mm) 410  
 W (mm) 250  
 Watts 1 x 40 E14  
 Shade TG106SHS  
 Fitting TB20S

**C** WILLOW

Medium Pendant

H (mm) ADJ 425 - 1545  
 W (mm) 350  
 Watts 1 x 60 E27  
 Shade TG106SHM  
 Fitting SU02

**A** WILLOW

Large Pendant

H (mm) ADJ 380 - 620  
 W (mm) 425  
 Watts 3 x 60 E27  
 Shade TG106SHL  
 Fitting SU02/3

OPTIONS & SIZES	S	M	L
Pendant	•	•	•
Inverted Pendant	•	•	•
Flush	•	•	•
Semi-Flush	•	•	•



C

**WILLOW** D  
Wall Light

H (mm) 150  
W (mm) 310  
D (mm) 150  
Watts 1 x 40 E14  
Shade TG106W  
Fitting WF1

**WILLOW** E  
Medium Table Lamp

H (mm) 530  
W (mm) 350  
Watts 2 x 60 E27  
Shade TG106SHM  
Fitting TB20M

**WILLOW** F  
Floor Lamp

H (mm) 1530  
W (mm) 425  
Watts 2 x 60 E27  
Shade TG106SHL  
Fitting FB20





Helensburgh...a striking design influenced from the Mackintosh style

**A HELENSBURGH**

Large Inverted Pendant

H (mm) 1100  
W (mm) 450  
Watts 3 x 60 E27  
Shade TA4/FL  
Fitting SU3FC

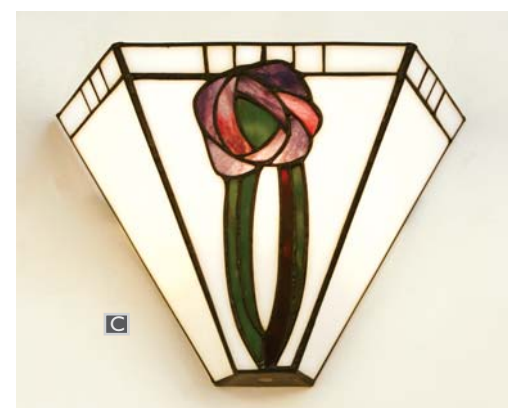
OPTIONS & SIZES	S	M	L
Pendant			●
Inverted Pendant			●
Flush			●
Semi-Flush			●



**B HELENSBURGH**

Flush Ceiling Light

H (mm) 180  
W (mm) 450  
Watts 2 x 60 E27  
Shade TA4/FL  
Fitting FL1



**C HELENSBURGH**

Wall Light

H (mm) 220  
W (mm) 300  
D (mm) 140  
Watts 1 x 40 E14  
Shade TA4/W  
Fitting WF1



A

Mackintosh collection



D

Chanin...symbolic Art Deco design in soft pinks, blue, green and cream American art glass

**CHANIN**

Pendant

H (mm) ADJ 465 - 1500  
W (mm) 360  
Watts 1 x 60 E27  
Shade T019SH35  
Fitting SU02

OPTIONS & SIZES	S	M	L
Pendant			●
Inverted Pendant			●
Flush			●
Semi-Flush			●

**CHANIN**

Table Lamp

H (mm) 540  
W (mm) 360  
Watts 2 x 60 E27  
Shade T019SH35  
Fitting TB20M



E

Ingram...an art deco rose is featured in Mackintosh style



A

**INGRAM**  
Large Inverted Pendant

OPTIONS & SIZES	S	M	L
Pendant		•	
Inverted Pendant		•	•
Flush			•
Semi-Flush		•	•

H (mm) 450  
W (mm) 450  
Watts 3 x 60 E27  
Shade TA20FL  
Fitting SU3FC/S

**INGRAM**  
Flush Ceiling Light

H (mm) 180  
W (mm) 450  
Watts 2 x 60 E27  
Shade TA20FL  
Fitting FL1



B



C

**INGRAM**  
Medium Table Lamp

H (mm) 480  
W (mm) 350  
Watts 1 x 60 E27  
Shade TA20SHM  
Fitting RB093M



D

**INGRAM**  
Small Lamp

H (mm) 330  
W (mm) 195  
Watts 1 x 40 E14  
Shade TA20SHS  
Fitting RB093S



E

**INGRAM**  
Wall Light

H (mm) 200  
W (mm) 300  
D (mm) 120  
Watts 1 x 40 E14  
Shade TA20W  
Fitting WF1



# Tiffany Art Nouveau

Designs redolent of the early part of the twentieth century, typified by stylish natural forms and converging and diverging lines.

Ashton...Organic flowers with dragonfly design



**A** ASHTON  
Flush Ceiling Light

H (mm) 150  
W (mm) 450  
Watts 2 x 60 E27  
Shade T022FL45  
Fitting FL1

**B** ASHTON  
Pendant

H (mm) ADJ 480 - 1515  
W (mm) 410  
Watts 1 x 60 E27  
Shade T022SH40  
Fitting SU02

OPTIONS & SIZES	S	M	L
Pendant	•	•	•
Inverted Pendant	•	•	
Flush			•
Semi-Flush			•



**B**

**C** ASHTON  
Small Lamp

H (mm) 480  
W (mm) 300  
Watts 1 x 40 E14  
Shade T022SH30  
Fitting RB093M



**C**



**D**

**D** ASHTON  
Wall Light

H (mm) 160  
W (mm) 305  
D (mm) 150  
Watts 1 x 40 E14  
Shade T022W  
Fitting WF1

**E** ASHTON  
Large Mirror

H (mm) 695  
W (mm) 500  
Code T022ML  
Can be hung either horizontally or vertically



**E**

ASHTON  
Table Lamp

H (mm) 575  
W (mm) 410  
Watts 2 x 60 E27  
Shade T022SH40  
Fitting RB093L

F



F



Dauphine...elegant Art Nouveau style with shimmering translucent glass.



A

**A DAUPHINE**  
Inverted Pendant

H (mm) ADJ 400 - 660  
W (mm) 400  
Watts 3 x 60 E27  
Shade T023SH40  
Fitting SU3C/ADJ

OPTIONS & SIZES	S	M	L
Pendant		•	
Inverted Pendant	•		
Flush			•
Semi-Flush		•	



C

**C DAUPHINE**  
Medium Table Lamp

H (mm) 580  
W (mm) 400  
Watts 2 x 60 E27  
Shade T023SH40  
Fitting DB6



B

**B DAUPHINE**  
Medium Pendant

H (mm) ADJ 420 - 1390  
W (mm) 400  
Watts 1 x 60 E27  
Shade T023SH40  
Fitting SU02

Ruban...flowing ribbons of colour in an Art Nouveau style.



A

**RUBAN** A

Inverted Pendant

H (mm) ADJ 400 - 660  
 W (mm) 400  
 Watts 3 x 60 E27  
 Shade T024SH40  
 Fitting SU3C/ADJ

OPTIONS & SIZES	S	M	L
Pendant	•	•	•
Inverted Pendant	•	•	•
Flush	•	•	•
Semi-Flush	•	•	•



C



B

**B RUBAN**

Medium Pendant

H (mm) ADJ 420 - 1390  
 W (mm) 400  
 Watts 1 x 60 E27  
 Shade T024SH40  
 Fitting SU02

**C RUBAN**

Medium Table Lamp

H (mm) 580  
 W (mm) 400  
 Watts 2 x 60 E27  
 Shade T024SH40  
 Fitting DB6



Châtelet, Lyon and Hector are inspired by the work of Hector Guimard. He designed many of the entrances to the Paris Metro that are now recognised as major works of the Art Nouveau period.

## Châtelet... 'Paris in the Belle Epoque'



### CHATELET

Small Table Lamp

H (mm) 330  
W (mm) 195  
Watts 1 x 40 E14  
Shade T12SHS  
Fitting RB093S



### CHATELET

Medium Table Lamp

H (mm) 560  
W (mm) 400  
Watts 2 x 60 E27  
Shade T12SHL  
Fitting DB6



### CHATELET

Medium Pendant

H (mm) ADJ 420 - 1500  
W (mm) 400  
Watts 1 x 60 E27  
Shade T12SHL  
Fitting SU02

OPTIONS & SIZES	S	M	L
Pendant	•	•	•
Inverted Pendant	•	•	•
Flush	•	•	•
Semi-Flush	•	•	•

Lyon...

'Paris in the Belle Epoque'



A

**LYON**

Small Table Lamp

H (mm) 330  
 W (mm) 195  
 Watts 1 x 40 E14  
 Shade T11SHS  
 Fitting RB093S

**LYON**

Medium Pendant

H (mm) ADJ 420 - 1500  
 W (mm) 400  
 Watts 1 x 60 E27  
 Shade T11SHL  
 Fitting SU02

OPTIONS & SIZES	S	M	L
Pendant	●	●	●
Inverted Pendant	●	●	●
Flush	●	●	●
Semi-Flush	●	●	●

**LYON**

Medium Table Lamp

H (mm) 560  
 W (mm) 400  
 Watts 2 x 60 E27  
 Shade T11SHL  
 Fitting DB6



B

C



# Hector... Paris in the Belle Epoque

Art Nouveau collection



A

B

C

## A HECTOR

Medium Pendant

H (mm) ADJ 420 - 1500  
 W (mm) 400  
 Watts 1 x 60 E27  
 Shade T13SHL  
 Fitting SU02

OPTIONS & SIZES	S	M	L
Pendant		●	
Inverted Pendant		●	
Flush		●	
Semi-Flush		●	

## B HECTOR

Medium Table Lamp

H (mm) 560  
 W (mm) 400  
 Watts 2 x 60 E27  
 Shade T13SHL  
 Fitting DB6

## C HECTOR

Small Table Lamp

H (mm) 330  
 W (mm) 195  
 Watts 1 x 40 E14  
 Shade T13SHS  
 Fitting RB093S





Prairie...Mackintosh rose with a twist



B



A



**A** PRAIRIE  
Medium Table Lamp

H (mm) 580  
W (mm) 420  
Watts 1 x 60 E27  
Shade T014SH40  
Fitting RB159M

**B** PRAIRIE  
Medium Pendant

H (mm) ADJ 485 - 1520  
W (mm) 420  
Watts 1 x 60 E27  
Shade T014SH40  
Fitting SU02

OPTIONS & SIZES	S	M	L
Pendant	•	•	•
Inverted Pendant	•	•	•
Flush	•	•	•
Semi-Flush	•	•	•



Jamelia ....sculptured design in organic colours



**A** JAMELIA  
Floor Lamp

H (mm) 1605  
W (mm) 500  
Watts 2 x 60 E27  
Shade T095SH50  
Fitting FB05



**B** JAMELIA  
Medium Pendant

H (mm) ADJ 465 - 1500  
W (mm) 430  
Watts 1 x 60 E27  
Shade T095SH40  
Fitting SU02

**C** JAMELIA  
Medium Table Lamp

H (mm) 465  
W (mm) 310  
Watts 1 x 60 E27  
Shade T095SH30  
Fitting TB05M

**D** JAMELIA  
Small Lamp

H (mm) 365  
W (mm) 200  
Watts 1 x 40 E14  
Shade T095SH20  
Fitting TB05S

OPTIONS & SIZES	S	M	L
Pendant	•	•	•
Inverted Pendant	•	•	•
Flush		•	•
Semi-Flush	•	•	



**JAMELIA**  
Large Pendant

H (mm) ADJ 520 - 1555  
W (mm) 500  
Watts 3 x 60 E27  
Shade T095SH50  
Fitting SU02/3

OPTIONS & SIZES	S	M	L
Pendant		•	•
Inverted Pendant		•	•
Flush		•	•
Semi-Flush		•	•

**JAMELIA**  
Wall Light

H (mm) 170  
W (mm) 310  
D (mm) 140  
Watts 1 x 40 E14  
Shade T095W  
Fitting WF1

**JAMELIA**  
Large Table Lamp

H (mm) 580  
W (mm) 430  
Watts 2 x 60 E27  
Shade T095SH40  
Fitting TB05L



E



F



G



# Tiffany Classic

Creative design with a more formal and neutral approach. This range combines traditional and non-traditional elements using Tiffany techniques.

Pearl...a jewel in the Classic Tiffany collection



**A PEARL**  
Semi Flush Ceiling Light

H (mm) 340  
W (mm) 370  
Watts 3 x 60 E27  
Shade TO6/M  
Fitting SF01

OPTIONS & SIZES	S	M	L
Pendant		•	
Inverted Pendant		•	
Flush		•	
Semi-Flush		•	



**B PEARL**  
Uplighter

H (mm) 1730  
W (mm) 370  
Watts 1 x 100 E27  
Shade TO6/M  
Fitting FL395

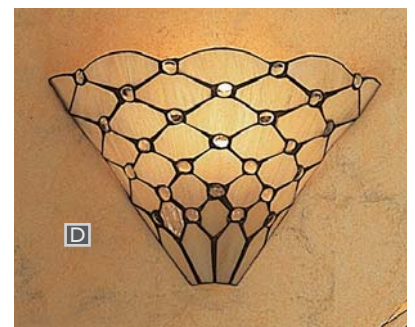


**C PEARL**  
Medium Table Lamp

H (mm) 500  
W (mm) 370  
Watts 1 x 60 E27  
Shade TO6/M  
Fitting DB741

**PEARL Wall Light** **D**

H (mm) 210  
W (mm) 290  
D (mm) 120  
Watts 1 x 40 E14  
Shade TO6/W  
Fitting WF1





Mille Feux.... a subtle blend of neutral Tiffany glass colours



A

**A** MILLE FEUX  
Medium Table Lamp  
H (mm) 445  
W (mm) 300  
Watts 1 x 60 E27  
Shade TO21M  
Fitting DB405M



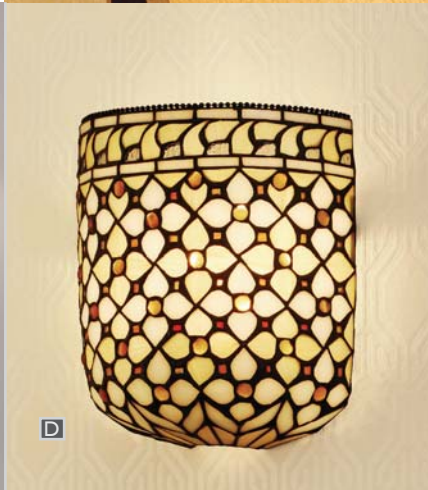
B

**B** MILLE FEUX  
Large Table Lamp  
H (mm) 610  
W (mm) 450  
Watts 2 x 60 E27  
Shade TO21L  
Fitting DB405L



C

**C** MILLE FEUX  
Flush Ceiling Light  
H (mm) 250  
W (mm) 450  
Watts 2 x 60 E27  
Shade TO21L  
Fitting FL1



D

**D** MILLE FEUX  
Wall Light  
H (mm) 230  
W (mm) 200  
D (mm) 160  
Watts 1 x 40 E14  
Shade TO21W  
Fitting WF1



E

**E** MILLE FEUX  
Pendant  
H (mm) 1150  
W (mm) 450  
Watts 3 x 60 E27  
Shade TO21L  
Fitting SU3FC

OPTIONS & SIZES	S	M	L
Pendant	•	•	
Inverted Pendant		•	
Flush		•	
Semi-Flush		•	



# Tiffany Studio

The Louis Tiffany Gallery features outstanding reproductions of favourite Tiffany designs. Made using the finest art glass without simplifications or modifications to the design, these uncompromising reproductions stand apart from the crowd

Green Dragonfly.... capturing the beauty of nature in an array of luxurious art glass



A

**A** GREEN DRAGONFLY  
Medium Table Lamp

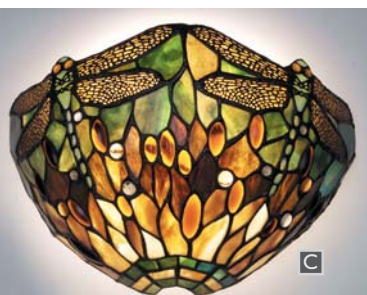
H (mm) 465  
W (mm) 300  
Watts 1 x 60 E27  
Shade TP1M  
Fitting DB234MG

**B** GREEN DRAGONFLY  
Floor Lamp

H (mm) 1660  
W (mm) 530  
Watts 2 x 60 E27  
Shade TP1/L  
Fitting FL420



B



C

**C** GREEN DRAGONFLY  
Wall Light

H (mm) 200  
W (mm) 330  
D (mm) 120  
Watts 1 x 40 E14  
Shade TP1W  
Fitting WF1

GREEN DRAGONFLY

Large Pendant

H (mm) ADJ 430-1360  
 W (mm) 530  
 Watts 3 x 60 E27  
 Shade TP1/L  
 Fitting SU02/3

OPTIONS & SIZES	S	M	L
Pendant	•	•	•
Inverted Pendant		•	•
Flush		•	
Semi-Flush		•	

GREEN DRAGONFLY

Large Table Lamp

H (mm) 565  
 W (mm) 400  
 Watts 2 x 60 E27  
 Shade TP1  
 Fitting DB234/VG



D



E



Red Dragonfly...a dramatic design set in a hue of red and purple

studio collection



A



C



D



B

**RED DRAGONFLY** A  
Floor Lamp

H (mm) 1660  
W (mm) 530  
Watts 2 x 60 E27  
Shade TP2/L  
Fitting FL420

**RED DRAGONFLY** B  
Wall Light

H (mm) 200  
W (mm) 330  
D (mm) 120  
Watts 1 x 40 E14  
Shade TP2W  
Fitting WF1

**RED DRAGONFLY** C  
Pendant

H (mm) ADJ 430 - 1360  
W (mm) 530  
Watts 3 x 60 E27  
Shade TP2/L  
Fitting SU02/3

**RED DRAGONFLY** D  
Medium Table Lamp

H (mm) 465  
W (mm) 300  
Watts 1 x 60 E27  
Shade TP2M  
Fitting DB234MR

OPTIONS & SIZES	S	M	L
Pendant	•	•	•
Inverted Pendant	•	•	•
Flush		•	
Semi-Flush		•	



RED DRAGONFLY **E**

Large Table Lamp

H (mm)	565
W (mm)	400
Watts	2 x 60 E27
Shade	TP2
Fitting	DB234LR



Studio collection





A

## Magnolia...a spray of flowers in shades of blue and white

### A MAGNOLIA

Pendant

H (mm)	ADJ 500 - 1535
W (mm)	400
Watts	1 x 60 E27
Shade	T010SH40
Fitting	SU02

#### OPTIONS & SIZES

	S	M	L
Pendant	•		
Inverted Pendant	•		
Flush	•		
Semi-Flush	•		

### B MAGNOLIA

Table Lamp

H (mm)	590
W (mm)	400
Watts	2 x 60 E27
Shade	T010SH40
Fitting	DB405L



B



Anderson...a grand statement piece in traditional American style



**ANDERSON**  
Large Pendant

H (mm) ADJ 430 - 1360  
W (mm) 500  
Watts 3 x 60 E27  
Shade TG82SHL  
Fitting SU02/3

OPTIONS & SIZES	S	M	L
Pendant			•
Inverted Pendant			•
Flush			
Semi-Flush			



**B** ANDERSON  
Floor Lamp

H (mm) 1640  
W (mm) 500  
Watts 3 x 60 E27  
Shade TG82SHL  
Fitting FL998

**C** ANDERSON  
Table Lamp

H (mm) 725  
W (mm) 500  
Watts 2 x 60 E27  
Shade TG82SHL  
Fitting TB12

**D** ANDERSON  
Mega Pendant

H (mm) 500 - 1900  
W (mm) 1020  
D (mm) 1020  
Watts 8 x 60 E27  
Shade 8xTG82MEGA  
Fitting SUMEGA



Sullivan...a bouquet of rich florals to enhance any décor



A



B

**B** SULLIVAN  
Large Inverted Pendant

H (mm) 1150  
W (mm) 560  
Watts 3 x 60 E27  
Shade TG72SHL  
Fitting SU3FC



C

**C** SULLIVAN  
Pendant

H (mm) ADJ 490 - 1440  
W (mm) 400  
Watts 1 x 60 E27  
Shade TG72SH  
Fitting SU02

OPTIONS & SIZES	S	M	L
Pendant	•	•	•
Inverted Pendant	•	•	•
Flush	•	•	•
Semi-Flush	•	•	•

studio collection

**A** SULLIVAN  
Table Lamp

H (mm) 640  
W (mm) 400  
Watts 2 x 60 E27  
Shade TG72SH  
Fitting TB10L



SULLIVAN  
Small Lamp

D

H (mm)	445
W (mm)	300
Watts	2 x 40 E14
Shade	TG72SHS
Fitting	TB10M

SULLIVAN  
Floor Lamp

E

H (mm)	1595
W (mm)	560
Watts	2 x 60 E27
Shade	TG72SHL
Fitting	FB10





# Fleurette...Spring flowers and blue butterflies

OPTIONS & SIZES	S	M	L
Pendant	•	•	•
Inverted Pendant	•	•	•
Flush	•	•	•
Semi-Flush	•	•	•

## A FLEURETTE

Table Lamp

H (mm) 590  
 W (mm) 415  
 Watts 2 x 60 E27  
 Shade T020SH40  
 Fitting TB16L

## B FLEURETTE

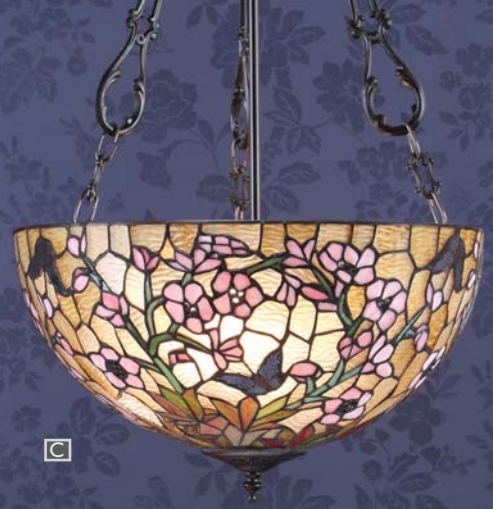
Pendant

H (mm) ADJ 500 - 1535  
 W (mm) 415  
 Watts 1 x 60 E27  
 Shade T020SH40  
 Fitting SU02

## C FLEURETTE

Inverted Pendant

H (mm) 980  
 W (mm) 415  
 Watts 3 x 60 E27  
 Shade T020SH40  
 Fitting SU3FC



C



B



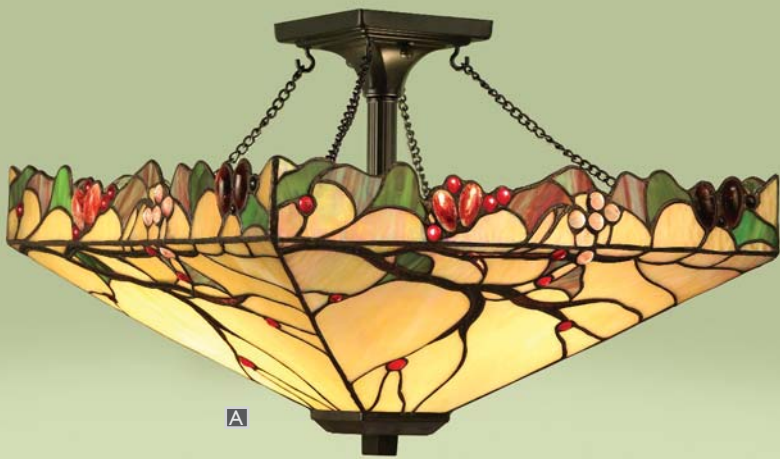
A

Studio collection

Interiors  
1900



Arbois...with clusters of glass grapes



A

**ARBOIS**  
Semi Flush Pendant

H (mm) 330  
W (mm) 425  
Watts 2 x 60 E27  
Shade T061SH40  
Fitting SFSQ

OPTIONS & SIZES	S	M	L
Pendant			•
Inverted Pendant			•
Flush			
Semi-Flush			•



B

**ARBOIS**  
Table Lamp

H (mm) 660  
W (mm) 425  
Watts 2 x 60 E27  
Shade T061SH40  
Fitting T061TB



C

**C** ARBOIS  
Pendant

H (mm) ADJ 460 - 1460  
W (mm) 425  
Watts 1 x 60 E27  
Shade T061SH40  
Fitting SU02



**A** EDEN  
Medium Table Lamp

H (mm) 590  
W (mm) 300  
Watts 1 x 60 E27  
Shade T062SH30  
Fitting T046TSB

**B** EDEN  
Pendant

H (mm) ADJ 470 - 1450  
W (mm) 400  
Watts 1 x 60 E27  
Shade T062SH40  
Fitting SU02

OPTIONS & SIZES	S	M	L
Pendant	•	•	
Inverted Pendant		•	
Flush		•	
Semi-Flush		•	

**C** EDEN  
Large Table Lamp

H (mm) 620  
W (mm) 400  
Watts 2 x 60 E27  
Shade T062SH40  
Fitting T046TB

Eden...a garden of flowers in multi colours.



**A**



**B**



**C**

# Tiffany Traditional

This range combines natural elements including butterflies, dragonflies and grapes.



A

## A BUTTERFLY Medium Pendant

H (mm) ADJ 450-1450  
W (mm) 390  
Watts 1 x 60 E27  
Shade TV158M  
Fitting SU02

OPTIONS & SIZES	S	M	L
Pendant	•	•	•
Inverted Pendant	•	•	•
Flush	•	•	•
Semi-Flush		•	

## B BUTTERFLY Floor Lamp

H (mm) 1660  
W (mm) 500  
Watts 2 x 60 E27  
Shade TV158L  
Fitting FL420



B



D

Butterfly...  
Floral design with  
radiant butterflies  
in American Art Glass



C



E

## C BUTTERFLY Large Table Lamp

H (mm) 620  
W (mm) 390  
Watts 2 x 60 E27  
Shade TV158M  
Fitting DB405L

## D BUTTERFLY Large Pendant

H (mm) ADJ 500 - 1500  
W (mm) 500  
Watts 3 x 60 E27  
Shade TV158L  
Fitting SU02/3

## E BUTTERFLY Small Table Lamp

H (mm) 480  
W (mm) 300  
Watts 1 x 40 E14  
Shade TV158S  
Fitting DB405M



# Clematis...a trellis of flowers



A

## A CLEMATIS Inverted Pendant

H (mm) ADJ 450 - 650  
W (mm) 500  
Watts 3 x 60 E27  
Shade T047SH50  
Fitting SU3C/ADJ



C



D



E

## B CLEMATIS Medium Pendant

H (mm) ADJ 500 - 1440  
W (mm) 400  
Watts 1 x 60 E27  
Shade T047SH40  
Fitting SU02

OPTIONS & SIZES	S	M	L
Pendant		•	•
Inverted Pendant		•	•
Flush	•	•	•
Semi-Flush	•	•	•

## C CLEMATIS Wall Light

H (mm) 155  
W (mm) 290  
D (mm) 135  
Watts 1 x 40 E14  
Shade T047W  
Fitting WF1

## D CLEMATIS Table Lamp

H (mm) 500  
W (mm) 400  
Watts 1 x 60 E27  
Shade T047SH40  
Fitting T046TB

## E CLEMATIS Floor Lamp

H (mm) 1640  
W (mm) 500  
Watts 2 x 60 E27  
Shade T047SH50  
Fitting T046FB



B

**CLEMATIS**  
Table Lamp  
with Solid Brass Base

H (mm) 540  
W (mm) 410  
Watts 2 x 60 E27  
Shade T047SH40  
Fitting BR054L



**F**



Ashtead...a border of autumnal colours using beautiful mottled glass



A

**A** ASHTEAD  
Floor Lamp

H (mm) 1580  
W (mm) 500  
Watts 2 x 60 E27  
Shade T046SH50  
Fitting T046FB



B

**B** ASHTEAD  
Inverted Pendant

H (mm) ADJ 440-660  
W (mm) 410  
Watts 3 x 60 E27  
Shade T046SH40  
Fitting SU3C/ADJ



C

**C** ASHTEAD  
Small Table Lamp

H (mm) 540  
W (mm) 300  
Watts 1 x 60 E27  
Shade T046SH30  
Fitting T046TSB

**ASHTEAD**

Pendant

H (mm) ADJ 440 - 1400  
 W (mm) 500  
 Watts 3 x 60 E27  
 Shade T046SH50  
 Fitting SU02/3

**D****ASHTEAD**

Table Lamp

H (mm) 580  
 W (mm) 400  
 Watts 2 x 60 E27  
 Shade T046SH40  
 Fitting T046TB

**E**

OPTIONS & SIZES	S	M	L
Pendant	•	•	•
Inverted Pendant		•	•
Flush	•	•	•
Semi-Flush		•	•

**ASHTEAD**

Wall Light

H (mm) 150  
 W (mm) 350  
 D (mm) 190  
 Watts 1 x 40 E14  
 Shade T046W  
 Fitting WF1

**F****D****F****E**





A

**A** COUNTRY BORDER  
Large Pendant

H (mm) ADJ 470 - 1590  
W (mm) 520  
Watts 3 x 60 E27  
Code TV152SHL  
Fitting SU02/3

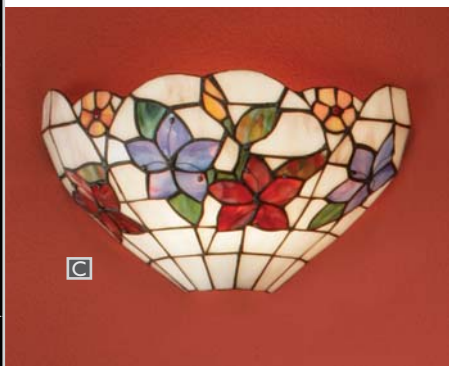
OPTIONS & SIZES	S	M	L
Pendant	•	•	•
Inverted Pendant	•	•	•
Flush	•	•	•
Semi-Flush	•	•	•

**B** COUNTRY BORDER  
Medium Pendant

H (mm) ADJ 455 - 1575  
W (mm) 420  
Watts 1 x 60 E27  
Code TV152SHM  
Fitting SU02



B



C

**C** COUNTRY BORDER  
Wall Light

H (mm) 170  
W (mm) 320  
D (mm) 130  
Watts 1 x 40 E14  
Shade TV152W  
Fitting WF1

**D** COUNTRY BORDER

Floor Lamp

H (mm) 1600  
W (mm) 520  
Watts 3 x 60 E27  
Shade TV152SHL  
Fitting DK1F



D

Country Border ...wild flowers  
on a refreshing white backdrop

COUNTRY BORDER E

Table Lamp with Majorelle base

H (mm)	560
W (mm)	400
Watts	2 x 60 E27
Code	TV152SHM
Fitting	T051TB



Detail of base T051TB

E



Kichiri...a garland of flowers wrap around this traditional design

Traditional collection

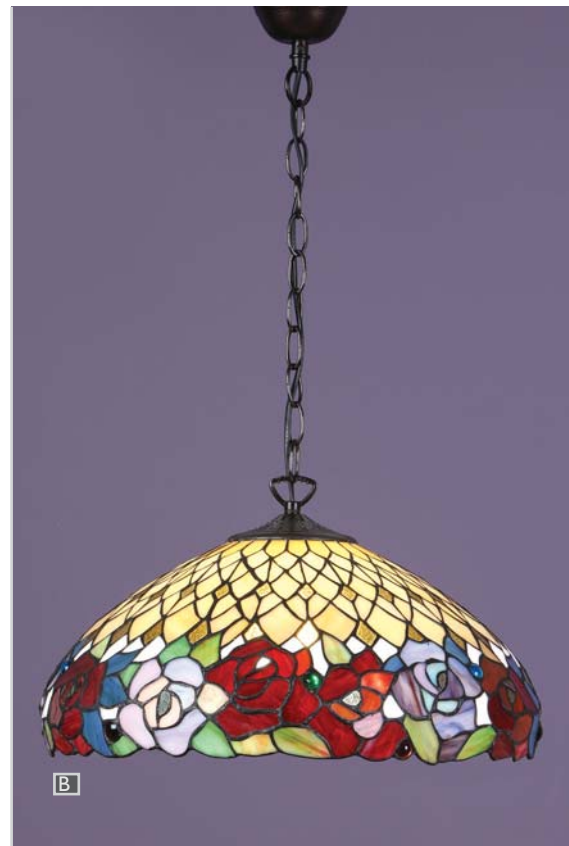


A

**A** KICHIRI  
Large Inverted Pendant

H (mm) 980  
W (mm) 560  
Watts 3 x 60 E27  
Shade T108SH50  
Fitting SU3FC

OPTIONS & SIZES	S	M	L
Pendant	•	•	•
Inverted Pendant	•	•	•
Flush	•	•	•
Semi-Flush	•	•	•



B

**B** KICHIRI  
Pendant

H (mm) ADJ 470 - 1505  
W (mm) 420  
Watts 1 x 60 E27  
Shade T108SH40  
Fitting SU02



D

**D** KICHIRI  
Flush Ceiling Light

H (mm) 150  
W (mm) 450  
Watts 2 x 60 E27  
Shade T108FL45  
Fitting FL1



C

**C** KICHIRI  
Small Table Lamp

H (mm) 470  
W (mm) 320  
Watts 2 x 60 E14  
Shade T108SH30  
Fitting TB10M

KICHIRI  
Floor Lamp

H (mm) 1595  
W (mm) 560  
Watts 2 x 60 E27  
Shade T108SH50  
Fitting FB10

E



E

KICHIRI  
Table Lamp

H (mm) 620  
W (mm) 420  
Watts 2 x 60 E27  
Shade T108SH40  
Fitting TB10L

F



F



Vesta...raising the curtains on this dramatic design in traditional style



A

**A** VESTA  
Large Inverted Pendant

H (mm)	ADJ 600 - 850
W (mm)	500
Watts	3 x 60 E27
Shade	TG67SHFL
Fitting	SU3C/ADJ



B

**B** VESTA  
Wall Light

H (mm)	160
W (mm)	360
D (mm)	180
Watts	1 x 40 E14
Shade	TG67W
Fitting	WF1



D

**D** VESTA  
Floor Lamp

H (mm)	1565
W (mm)	500
Watts	2 x 60 E27
Shade	TG67SHFL
Fitting	FB10



C

**C** VESTA  
Medium Table Lamp

H (mm)	450
W (mm)	300
Watts	1 x 60 E14
Shade	TG67SHM
Fitting	TB10M

Traditional collection



**VESTA** E  
Large Table Lamp

H (mm) 650  
W (mm) 420  
Watts 2 x 60 E27  
Shade TG67SHL  
Fitting TB10L

**VESTA** F  
Pendant

H (mm) ADJ 450 - 1300  
W (mm) 420  
Watts 3 x 60 E27  
Shade TG67SHL  
Fitting SU02/3

OPTIONS & SIZES	S	M	L
Pendant	•	•	•
Inverted Pendant	•	•	•
Flush	•	•	•
Semi-Flush	•	•	•



F



E





Diana...a border of red rosettes set in a multi colour of American Art Glass



A

**A** DIANA  
Large Inverted Pendant

H (mm) 980  
W (mm) 500  
Watts 3 x 60 E27  
Shade T101SH50  
Fitting SU3FC

OPTIONS & SIZES	S	M	L
Pendant	•	•	•
Inverted Pendant		•	•
Flush	•		
Semi-Flush		•	



B

**B** DIANA  
Small Table Lamp

H (mm) 465  
W (mm) 320  
Watts 2 x 60 E14  
Shade T101SH30  
Fitting DB405M



C

**C** DIANA  
Pendant

H (mm) ADJ 460 - 1495  
W (mm) 410  
Watts 1 x 60 E27  
Shade T101SH40  
Fitting SU02

<b>DIANA</b>		<b>D</b>
Wall Light		
H (mm)	150	
W (mm)	320	
D (mm)	155	
Watts	1 x 40 E14	
Shade	T101W	
Fitting	WF1	

<b>DIANA</b>		<b>E</b>
Large Table Lamp		
H (mm)	595	
W (mm)	410	
Watts	2 x 60 E27	
Shade	T101SH40	
Fitting	DB405L	

<b>DIANA</b>		<b>F</b>
Floor Lamp		
H (mm)	1640	
W (mm)	500	
Watts	3 x 60 E27	
Shade	T101SH50	
Fitting	FL998	



D



F



E





Lelani...a bold design highlighting vibrant red Art Glass



**B** LELANI  
Mini Lamp

H (mm) 300  
W (mm) 150  
D (mm) 150  
Watts 1 x 40 E14  
Shade TG103SHMIN  
Fitting TB17MIN



**C** LELANI  
Wall Light

H (mm) 170  
W (mm) 350  
D (mm) 175  
Watts 1 x 40 E14  
Shade TG103W  
Fitting WF1

**A** LELANI  
Medium Pendant

H (mm) ADJ 430 - 1550  
W (mm) 400  
D (mm) 400  
Watts 1 x 60 E27  
Shade TG103SHM  
Fitting SU02

OPTIONS & SIZES	S	M	L
Pendant	•	•	•
Inverted Pendant	•	•	•
Flush	•	•	•
Semi-Flush	•	•	•



**LELANI** **D**  
Table Lamp  
H (mm) 600  
W (mm) 400  
D (mm) 400  
Watts 2 x 60 E27  
Shade TG103SHM  
Fitting TB17M

**LELANI** **E**  
Floor Lamp  
H (mm) 1580  
W (mm) 440  
D (mm) 440  
Watts 2 x 60 E27  
Shade TG103SHL  
Fitting FB17







A



B

**BERNWOOD**  
3 Chain Pendant

H (mm) ADJ 600 - 850  
W (mm) 500  
Watts 3 x 60 E27  
Shade TG62/SHL  
Fitting SU3C/ADJ

OPTIONS & SIZES	S	M	L
Pendant	•	•	•
Inverted Pendant	•	•	•
Flush	•	•	•
Semi-Flush	•	•	•



C

**BERNWOOD**  
Flush Ceiling Lamp

H (mm) 200  
W (mm) 460  
Watts 2 x 60 E27  
Shade TG62/SH  
Fitting FL1



D

**BERNWOOD**  
Wall Light

H (mm) 160  
W (mm) 350  
D (mm) 120  
Watts 1 x 40 E14  
Shade TG62/W  
Fitting WF1



E



F

**A** **BERNWOOD**  
Floor Lamp

H (mm) 1570  
W (mm) 500  
Watts 2 x 60 E27  
Shade TG62/SHL  
Fitting FB10

**B** **BERNWOOD**  
Floor Uplighter

H (mm) 1765  
W (mm) 400  
Watts 1 x 100 E27  
Shade TG62SHUL  
Fitting UL10

**BERNWOOD**  
Small Table Lamp

H (mm) 390  
W (mm) 200  
Watts 1 x 40 E14  
Shade TG62SHS  
Fitting TB10S

BERNWOOD  
Large Table Lamp

H (mm) 635  
W (mm) 460  
Watts 2 x 60 E27  
Shade TG62/SH  
Fitting TB10L





Red Lilies...with cascades of vibrant red petals



A

**A RED LILIES**

Medium Pendant

H (mm) ADJ 440-1410  
 W (mm) 410  
 Watts 1 x 60 E27  
 Shade T032SH40  
 Fitting SU02



B

**B RED LILLIES**

Inverted Pendant

H (mm) ADJ 400 - 660  
 W (mm) 410  
 Watts 3 x 60 E27  
 Shade T032SH40  
 Fitting SU3C/ADJ

OPTIONS & SIZES	S	M	L
Pendant		•	
Inverted Pendant		•	
Flush		•	
Semi-Flush		•	



D

**D RED LILIES**

Large Table Lamp

H (mm) 585  
 W (mm) 410  
 Watts 1 x 60 E27  
 Shade T032SH40  
 Fitting DB130L1

**C RED LILIES**

Wall Light

H (mm) 160  
 W (mm) 320  
 D (mm) 160  
 Watts 1 x 40 E14  
 Shade T032W  
 Fitting WF1



C



# Josette

...a design redolent of traditional Tiffany styles

## JOSETTE

Table Lamp

H (mm) 500  
W (mm) 350  
Watts 1 x 60 E27  
Shade TV38/M  
Fitting DB741

## JOSETTE

Uplighter

H (mm) 1750  
W (mm) 350  
Watts 1 x 100 E27  
Shade TV38/M  
Fitting FL395

## JOSETTE

Small Table Lamp

H (mm) 340  
W (mm) 200  
Watts 1 x 40 E14  
Shade TV38/S  
Fitting DB6S

OPTIONS & SIZES	S	M	L
Pendant	•	•	•
Inverted Pendant	•	•	•
Flush	•	•	•
Semi-Flush	•	•	•



## D BOTANICA

Ceiling Light

H (mm) 160  
W (mm) 450  
Watts 2 x 60 E27  
Shade TS07FL  
Fitting FL1

Botonica...simple & elegant traditional design with a modern twist



## E BOTANICA

Wall Light

H (mm) 200  
W (mm) 300  
D (mm) 120  
Watts 1 x 40 E14  
Shade TS07W  
Fitting WF1



## F BOTANICA

3 Chain Pendant

H (mm) 450  
W (mm) 450  
Watts 3 x 60 E27  
Shade TS07FL  
Fitting SU3C/S

OPTIONS & SIZES	S	M	L
Pendant	•	•	•
Inverted Pendant	•	•	•
Flush	•	•	•
Semi-Flush	•	•	•



## G BOTANICA

Medium Table Lamp

H (mm) 500  
W (mm) 260  
Watts 1 x 60 E27  
Shade TS07SHM  
Fitting B576S/AB



## H BOTANICA

Small Table Lamp

H (mm) 380  
W (mm) 160  
Watts 1 x 40 E14  
Shade TS07SHS  
Fitting DB305S



Mini Lamps....beautifully crafted in miniature form using quality Art Glass



**A** DRAGONFLY BLUE

Mini Lamp

H (mm) 315  
W (mm) 145  
Watts 1 x 40 E14  
Shade TMINSH10  
Fitting TMB12

**B** DRAGONFLY GREEN

Mini Lamp

H (mm) 315  
W (mm) 145  
Watts 1 x 40 E14  
Shade TMINSH9  
Fitting TMB12



**C** DRAGONFLY RED

Mini Lamp

H (mm) 315  
W (mm) 145  
Watts 1 x 40 E14  
Shade TMINSH11  
Fitting TMB12

**D** LORETTE

Mini Lamp

H (mm) 320  
W (mm) 150  
Watts 1 x 40 E14  
Shade TMINSH2  
Fitting TMB2

**E** ROCHETTE

Mini Lamp

H (mm) 300  
W (mm) 150 x 150  
D (mm) 150  
Watts 1 x 40 E14  
Shade TMINSH5  
Fitting TMB5



Mini Lamp collection





**F** ALCEA  
Mini Lamp

H (mm) 290  
W (mm) 150  
D (mm) 150  
Watts 1 x 40 E14  
Shade TG102SHMIN  
Fitting TB20MIN

**G** WILLOW  
Mini Lamp

H (mm) 300  
W (mm) 150  
D (mm) 150  
Watts 1 x 40 E14  
Shade TG106SHMIN  
Fitting TB20MIN



**G**



**H** SYLVETTE  
Mini Lamp

H (mm) 310  
W (mm) 150  
Watts 1 x 40 E14  
Shade TMINSH1  
Fitting TMB1

**I** LELANI  
Mini Lamp

H (mm) 300  
W (mm) 150  
D (mm) 150  
Watts 1 x 40 E14  
Shade TG103SHMIN  
Fitting TB17MIN



**I**



Flame Dragonfly...traditional Tiffany design in flame reds and orange



A

**A** FLAME DRAGONFLY  
Large Inverted Pendant

H (mm) ADJ 480 - 680  
W (mm) 500  
Watts 3 x 60 E27  
Shade T077SH50  
Fitting SU3C/ADJ



C

**C** FLAME DRAGONFLY  
Wall Light

H (mm) 207  
W (mm) 350  
D (mm) 140  
Watts 1 x 40 E14  
Shade T077W  
Fitting WF1

**D** FLAME DRAGONFLY  
Small Table Lamp

H (mm) 340  
W (mm) 200  
Watts 1 x 40 E14  
Shade T077SH20  
Fitting DB6S

**E** FLAME DRAGONFLY  
Floor Lamp

H (mm) 1595  
W (mm) 500  
Watts 2 x 60 E27  
Shade T077SH50  
Fitting DK1F



B

**B** FLAME DRAGONFLY  
Medium Pendant

H (mm) ADJ 470 - 1505  
W (mm) 410  
Watts 3 x 60 E27  
Shade T077SH40  
Fitting SU02/3

OPTIONS & SIZES	S	M	L
Pendant	•	•	•
Inverted Pendant	•	•	•
Flush	•	•	•
Semi-Flush	•	•	•



E

FLAME DRAGONFLY **F**

Medium Table Lamp

H (mm) 510  
W (mm) 300  
Watts 2 x 60 E27  
Shade T077SH30  
Fitting DB6

FLAME DRAGONFLY **G**

Large Pendant

H (mm) ADJ 545 - 1580  
W (mm) 500  
Watts 3 x 60 E27  
Shade T077SH50  
Fitting SU02/3

FLAME DRAGONFLY **H**

Intermediate Table Lamp

H (mm) 540  
W (mm) 410  
Watts 2 x 60 E27  
Shade T077SH40  
Fitting DB6



**F**



**G**



**H**





**A** BLUE DRAGONFLY  
Large Inverted Pendant

H (mm) 960  
W (mm) 500  
Watts 3 x 60 E27  
Shade T009SH50  
Fitting SU3FC



**C** BLUE DRAGONFLY  
Wall Light

H (mm) 207  
W (mm) 350  
D (mm) 140  
Watts 1 x 40 E14  
Shade T009W  
Fitting WF1

**D** BLUE DRAGONFLY  
Small Table Lamp

H (mm) 340  
W (mm) 200  
Watts 1 x 40 E14  
Shade T009SH20  
Fitting DB6S

**E** BLUE DRAGONFLY  
Medium Inverted Pendant

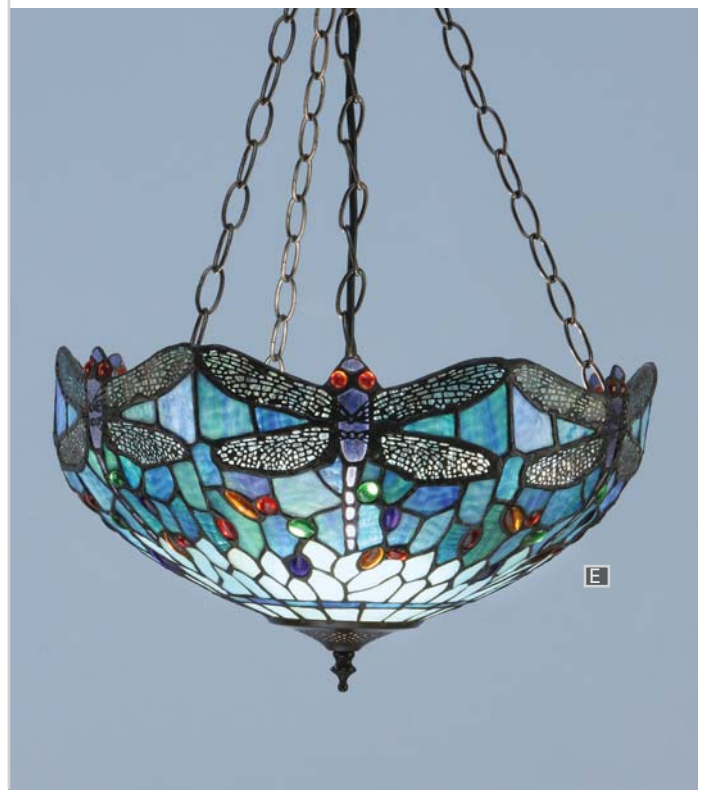
H (mm) ADJ 600 - 850  
W (mm) 410  
Watts 3 x 60 E27  
Shade T009SH40  
Fitting SU3C/ADJ



**B** BLUE DRAGONFLY  
Medium Pendant

H (mm) ADJ 470 - 1505  
W (mm) 410  
Watts 3 x 60 E27  
Shade T009SH40  
Fitting SU02/3

OPTIONS & SIZES	S	M	L
Pendant	•	•	•
Inverted Pendant	•	•	•
Flush	•	•	•
Semi-Flush	•	•	•



**BLUE DRAGONFLY** **F**  
Intermediate Table Lamp

H (mm) 540  
W (mm) 410  
Watts 2 x 60 E27  
Shade T009SH40  
Fitting DB6

**BLUE DRAGONFLY** **G**  
Floor Lamp

H (mm) 1595  
W (mm) 500  
Watts 2 x 60 E27  
Shade T009SH50  
Fitting DK1F

**BLUE DRAGONFLY** **H**  
Medium Table Lamp

H (mm) 510  
W (mm) 300  
Watts 2 x 60 E27  
Shade T009SH30  
Fitting DB6



Traditional collection



# Beige Dragonfly...traditional interpretation of an iconic Tiffany design



A

**A** BEIGE DRAGONFLY  
Medium Pendant

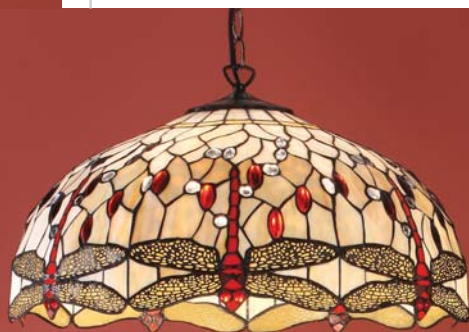
H (mm) ADJ 470 - 1505  
W (mm) 410  
Watts 1 x 60 E27  
Shade T056SH40  
Fitting SU02

**G** BEIGE DRAGONFLY  
Large Inverted Pendant

H (mm) 960  
W (mm) 500  
Watts 3 x 60 E27  
Shade T056SH50  
Fitting SU3FC



G



C

OPTIONS & SIZES	S	M	L
Pendant	•	•	•
Inverted Pendant	•	•	•
Flush	•	•	•
Semi-Flush	•	•	•

**H** BEIGE DRAGONFLY  
Floor Lamp

H (mm) 1640  
W (mm) 500  
Watts 3 x 60 E27  
Shade T056SH50  
Fitting FL998



B

**B** BEIGE DRAGONFLY  
Large Table Lamp

H (mm) 535  
W (mm) 410  
Watts 2 x 60 E27  
Shade T056SH40  
Fitting DB6



D

**D** BEIGE DRAGONFLY  
Medium Table Lamp

H (mm) 510  
W (mm) 300  
Watts 2 x 60 E27  
Shade T056SH30  
Fitting DB6

**C** BEIGE DRAGONFLY  
Large Pendant

H (mm) ADJ 480 - 680  
W (mm) 500  
Watts 3 x 60 E27  
Shade T056SH50  
Fitting SU02/3

**E** BEIGE DRAGONFLY  
Small Table Lamp

H (mm) 340  
W (mm) 200  
Watts 1 x 40 E14  
Shade T056SH20  
Fitting DB6S

**F** BEIGE DRAGONFLY  
Wall Light

H (mm) 207  
W (mm) 350  
D (mm) 140  
Watts 1 x 40 E14  
Shade T056W  
Fitting WF1



F

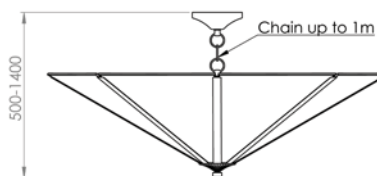
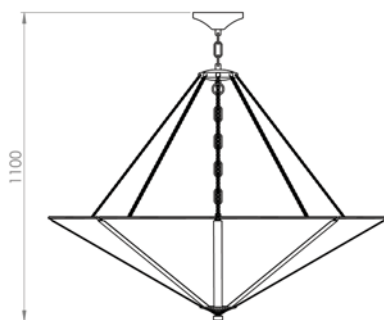
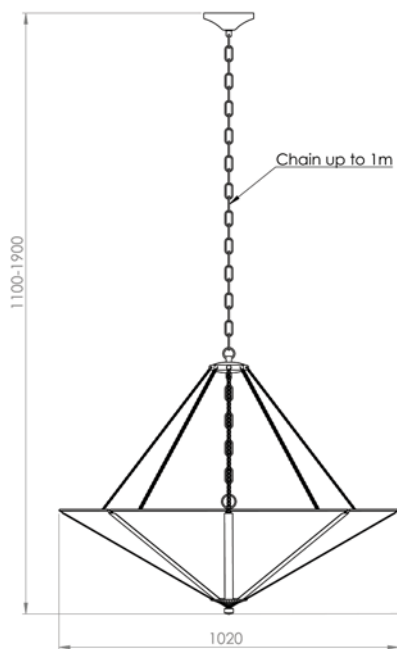


H

Traditional collection

Interiors  
1900

# Tiffany Mega Pendants



This new concept in large pendants from Interiors 1900 can make stunning centre pieces in large houses, but are also particularly suitable for commercial use. They are designed to be easy to assemble and flexible to use by allowing a number of different configurations. Pendants can be short for a close to ceiling fitting or used as a more traditional 8 chain pendant. The suspension of these elegant 8 chain pendants can be further extended by using a single chain extension making them particularly suitable for large rooms or stairwells. Extra chain is available for even larger drops.

The design has a further advantage; individual panels can be replaced in the unfortunate situation where part of the shade is damaged. Please enquire for custom designs.



## A BEIGE DRAGONFLY Mega Pendant

H (mm)	500 - 1900
W (mm)	1020
D (mm)	1020
Watts	8 x 60 E27
Shade	8 x T056MEGA
Fitting	SUMEGA

Beige Dragonfly...a traditional Tiffany theme in soft beige and striking red





B

Dauphine...organic  
flowing style from the Art  
Nouveau movement

**B** DAUPHINE  
Mega Pendant

H (mm) 500 - 1900  
W (mm) 1020  
D (mm) 1020  
Watts 8 x 60 E27  
Shade 8 x T023MEGA  
Fitting SUMEGA

M e g a P e n d a n t c o l l e c t i o n

Anderson...a traditional  
design in spectacular art glass



C

**C** ANDERSON  
Mega Pendant

H (mm) 500 - 1900  
W (mm) 1020  
D (mm) 1020  
Watts 8 x 60 E27  
Shade 8 x TG82MEGA  
Fitting SUMEGA

*Interiors*  
1900

Manhattan...a striking symmetrical Art Deco design in warm interior colours

MANHATTAN



Mega Pendant

H (mm) 500 - 1900  
W (mm) 1020  
D (mm) 1020  
Watts 8 x 60 E27  
Shade 8 x T015MEGA  
Fitting SUMEGA





# Tiffany Mirrors

inspired and designed to co-ordinate with some of our iconic Tiffany collections

Astoria...for the art deco connoisseur with bevelled mirrors and irridised glass surrounds



Mirror collection

**A** ASTORIA  
Table Lamp

H (mm) 580  
W (mm) 400  
Watts 2 x 60 E27  
Shade T026SH40  
Fitting TG08TB

**B** ASTORIA  
Large Mirror

H (mm) 700  
W (mm) 570  
Code T026ML

For wall hanging only

**C** ASTORIA  
Small Mirror

H (mm) 300  
W (mm) 230  
Code T026MS

Can be hung on a wall or desk mounted

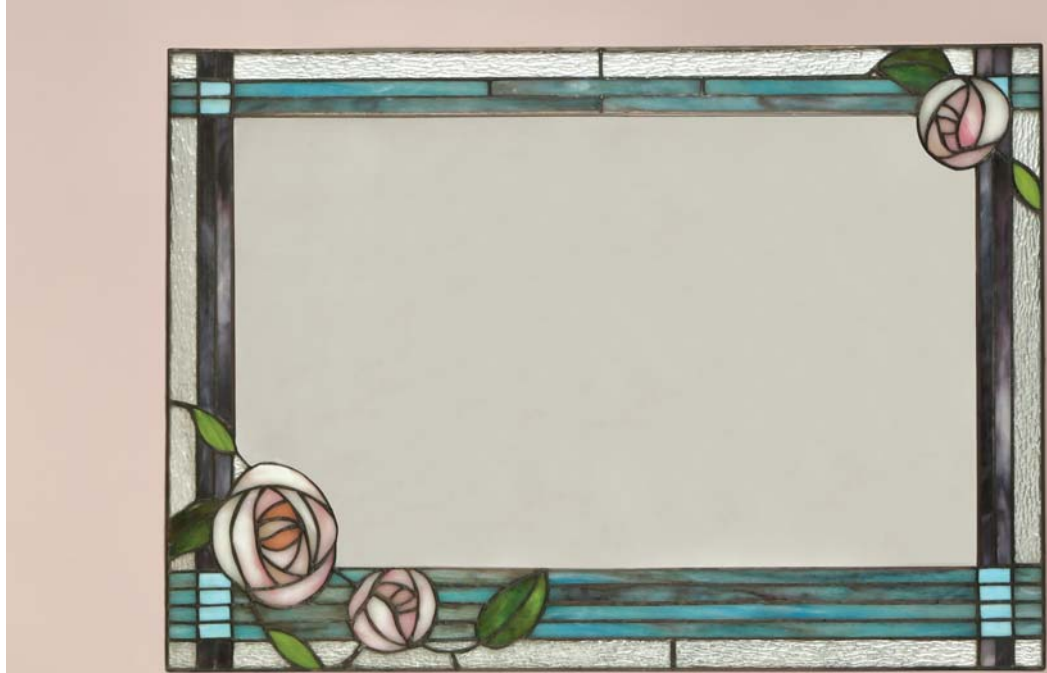
A complete Astoria range is available. See pg 10-11 or visit our website: [www.interiors1900.co.uk](http://www.interiors1900.co.uk)

**WILLOW**

Large Mirror

H (mm) 695  
W (mm) 500  
Code T106ML

**A**



**A**



The Willow large mirror can be hung either horizontally or vertically



**B**

**C**

A complete Willow range is available.  
See pg 24-25 or visit our website:  
[www.interiors1900.co.uk](http://www.interiors1900.co.uk)

**B WILLOW**

Table Lamp

H (mm) 530  
W (mm) 350  
Watts 2 x 60 E27  
Shade TG106SHM  
Fitting TB20M

**C WILLOW**

Small Mirror

H (mm) 300  
W (mm) 215  
Code T106MS

Can be hung on a wall  
or desk mounted



## Beige Dragonfly...a traditional interpretation of an icon Tiffany design

### A BEIGE DRAGONFLY

Large Mirror

H (mm) 695  
W (mm) 500  
Code T056ML

For wall hanging only

### B BEIGE DRAGONFLY

Small Mirror

H (mm) 350  
W (mm) 235  
Code T056MS

Can be hung on a wall  
or desk mounted

### C BEIGE DRAGONFLY

Large Table Lamp

H (mm) 535  
W (mm) 410  
Watts 2 x 60 E27  
Shade T056SH40  
Fitting DB6

A complete Beige Dragonfly  
range is available. See  
pg 76 or visit our website:  
[www.interiors1900.co.uk](http://www.interiors1900.co.uk)



A



B



C

Ashton...butterfly and lilies with an art Nouveau influence



**ASHTON** **A**

Mirror

H (mm) 695  
W (mm) 500  
Code T022ML

Can be hung either horizontally or vertically

**ASHTON** **B**

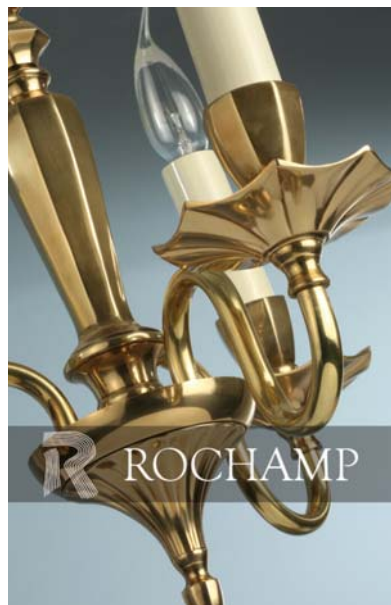
Table Lamp

H (mm) 575  
W (mm) 410  
D (mm) 1020  
Watts 2 x 60 E27  
Shade T022SH40  
Fitting RB093L

A complete Ashton range is available. See pg 28-29 or visit our website: [www.interiors1900.co.uk](http://www.interiors1900.co.uk)



# Interiors 1900



Established for over twenty five years, Interiors 1900 has built a strong reputation for providing high quality lamps and original designs. The company has continuously developed its range from the well-established and market leading Tiffany range to the increasingly highly regarded New Classics range of modern lighting.

The recent acquisition of the Rochamp range adds an important dimension to the company's offer. Keeping the best of the Rochamp range, including Kutani, exciting new products will be developed by our design team to add to and enhance this quality brand.

Please enquire for details of our other ranges or visit our website:

[www.interiors1900.co.uk](http://www.interiors1900.co.uk)

Products and images contained within this catalogue are subject to copyright/design right. Interiors 1900 Ltd will take any necessary action to protect its copyright/design right including action for primary and secondary infringement.

- Products are offered subject to availability
- Measurements are approximate.
- Many items are hand made. Colours and finishes may vary from those shown.
- All orders/sales are subject to Interiors 1900 Ltd's Terms & Conditions.

Interiors 1900 Ltd

Unit A, Tyson Courtyard,  
Weldon South Industrial Estate,  
Corby, Northants, NN18 8AZ, UK

Tel: 01536 44 5000 (UK & Eire)  
0044 1536 44 5001 (France)

Fax: 0044 1536 44 5004

Email: [sales@interiors1900.co.uk](mailto:sales@interiors1900.co.uk)

[www.interiors1900.co.uk](http://www.interiors1900.co.uk)

