

PHILIPS

Spot light

myLiving

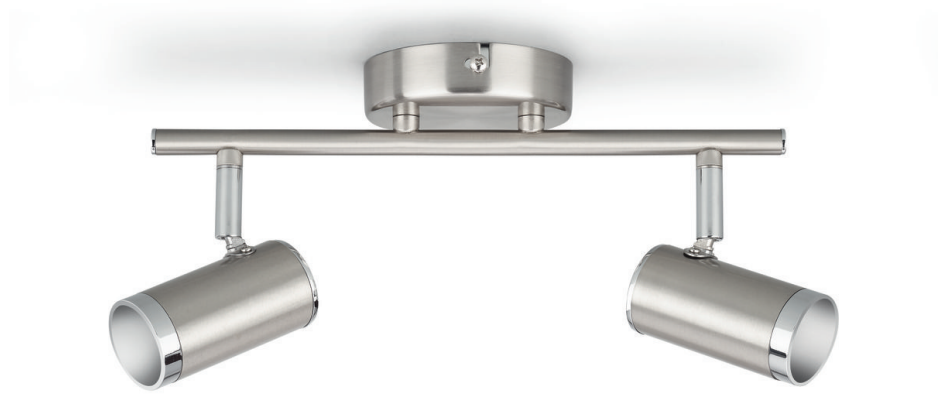
ESPIMAS

chrome

LED



50136/11/P1



Direct the light as you like

This practical Philips spot light gives you the best value for your money. The high quality LED included will save you up to 80% energy. Enjoy the natural light and direct the light where you like it.

Sustainable light solutions

- Energy saving
- High quality LED light
- Long operating life of up to 15 years

Special characteristics

- Adjustable spot head

Highlights

Energy saving



This Philips energy-saving lamp conserves energy compared with traditional light sources, helping you to save money on your electricity bills and do your bit for the environment.

High quality LED light



The LED technology integrated into this Philips lamp is a unique solution developed by Philips. It turns on instantly, enables an optimal light output and brings out vivid colours in your home.

Long operating life



A light source you can trust. The integrated LEDs used in this Philips LED lamp will last up to 15,000 hours (which equals 15 years on the basis of an average use of 3 hours/day with at least 13,000 on/off switching cycles). It feels so good to think that you won't have to worry about maintenance or light bulb replacement while having the perfect light ambience in your home.

Adjustable spot head



Direct the light where you want it most by simply adjusting, rotating or tilting the spot head of the lamp.

Specifications

Design and finishing

- Colour: chrome
- Material: metal

Extra feature/accessory incl.

- LED integrated: Yes

Miscellaneous

- Especially designed for: Living Room and Bedroom, Kitchen
- Style: Contemporary
- Type: Spot light
- EyeComfort: No

Power consumption

- Energy efficiency label (EEL): Built in LED

Product dimensions and weight

- Height: 13.1 cm
- Length: 30.5 cm
- Net weight: 0.645 kg
- Width: 12 cm

Service

- Warranty: 2 year(s)

Technical specifications

- Lifetime up to: 15,000 h
- Light source equivalent to traditional bulb of: 31 W
- Total lumen output fixture: 680 lm
- Bulb technology: LED, 230 V
- Light colour: warm white
- Mains power: 50-60 Hz
- Fixture dimmable: No
- LED: Yes
- Built-in LED: Yes
- Energy class included light source: Built-in LED
- Number of bulbs: 2
- Wattage bulb included: 4.3 W
- IP code: IP20
- Class of protection: I - earthed

- Light source replaceable: No
- Replaceability of control gears: Replaceable control gear by a professional
- Replaceability of light source: Replaceable LED light source by a professional

Packaging dimensions and weight

- EAN/UPC - product: 8718696163092
- Net weight: 0.645 kg
- Gross weight: 0.823 kg
- Height: 314.000 mm
- Length: 111.000 mm
- Width: 151.000 mm
- Material number (12NC): 915005496701



Issue date: 2021-08-11
Version: 0.687

© 2021 Signify Holding. All rights reserved. Signify does not give any representation or warranty as to the accuracy or completeness of the information included herein and shall not be liable for any action in reliance thereon. The information presented in this document is not intended as any commercial offer and does not form part of any quotation or contract, unless otherwise agreed by Signify. Philips and the Philips Shield Emblem are registered trademarks of Koninklijke Philips N.V.

www.lighting.philips.com