

PHILIPS

Buratto single
spotlight ext.

Hue White
ambiance

Extension spotlight - Hue 2020

GU10

Aluminium

Smart control with Hue bridge*

8718696164051



Light for your moments

from sunrise to sunset

Extend your Philips Hue system with additional white ambiance spots and enjoy warm to cool white light. For smart control, you need is the Hue bridge that comes with the starter kit. Connect the spot to the bridge and control it your way.

High quality light and design

- High light output

Light for your moments

- Create your ambiance with warm white to cool daylight
- Relax, read, concentrate and energize with light recipes
- Installation free dimming
- Wake up and go to sleep naturally
- Smart control, home and away
- Set timers for your convenience
- Control it your way
- Requires a bridge or switch

Highlights

High light output

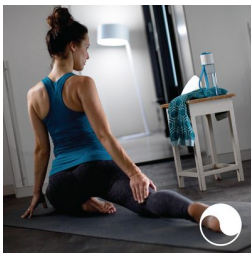
High quality light with strong light output, providing plenty of white light for any moment or task.

Create your ambiance



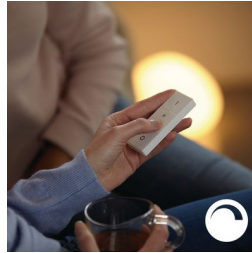
Set the right ambiance for any moment and decorate your home with warm to cool white light. Enjoy different styles throughout the year, no matter if it's the crisp white light reminding you of a spring breeze, the warm white light of a summer sun, or the ice cool daylight of winter. Connection with the Philips Hue bridge required for this functionality.

Light for your daily routines



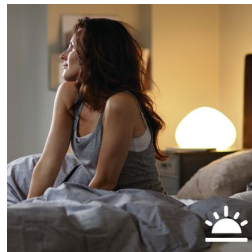
Light influences our mood and behavior. Philips Hue can help you to customize your daily routines into moments you can enjoy. Skip your morning coffee and get ready for the day with cool, bright white daylight that helps to energize your body and mind. Stay focussed with finely tuned bright white light. Or put your feet up and relax with a soft glow of white light for the perfect end of the day.

Installation free dimming



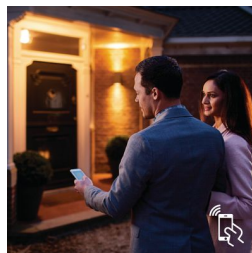
Experience guaranteed smooth dimming with Philips Hue. Not too bright. Not too dark. Just right. No need for wires, an electrician or installation

Wake up and go to sleep



Philips Hue will help get you out of bed the way you like it, helping you start your day feeling refreshed. The light brightness increases gradually mimicking the effect of sunrise and helps you wake up naturally, instead of being woken up by the loud sound of an alarm clock. Start your day, the right way. In the evening, the relaxing warm white light helps you to unwind, relax and prepare your body for a good night's sleep. Connection with the Philips Hue bridge required for this functionality.

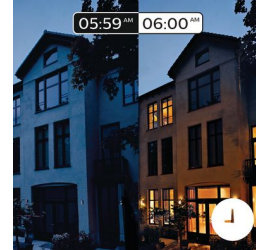
Smart control, home and away



With the Philips Hue iOS and Android apps you can control your lights remotely wherever you are. Check if you have forgotten to switch

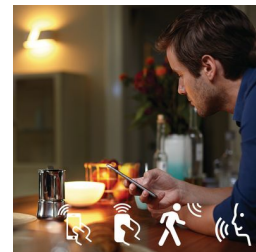
your lights off before you left your home, and switch them on if you are working late. Connection with the Philips Hue bridge required for this functionality.

Timers for your convenience



Philips Hue can make it seem like you're home when you're not, using the schedule function in the Philips Hue app. Set the lights to come on at a pre-set time, so the lights are on when you arrive home. You can even set rooms to light up at different times. And of course, you can let the lights turn off gradually in the night, so you never have to worry whether you've left any lights on. Connection with the Philips Hue bridge required for this functionality.

Control it your way



Connect your Philips Hue lights with the bridge and start discovering the endless possibilities. Control your lights from your smartphone or tablet via the Philips Hue app, or add switches to your system to activate your lights. Set timers, notifications, alarms, and more for the full Philips Hue experience. Philips Hue even works with Amazon Alexa, Apple Homekit and Google Home to allow you to control your lights with your voice.

Specifications

The bulb

Fitting: GU10

Wattage: 6 W

Number of switching cycles: 50000

Input voltage: 220V-240V

Lumen output: 250 lm

Dimmable

Warm-up time: <0.5s, Instant on

Energy efficiency label: A+

What's supported

IOS

HomeKit compatible

iPad

iPad Air

iPhone

iPod Touch

Extra features

Color changing: No

Technical specifications

Class of protection: I - earthed

Indoor/Outdoor: Indoor lighting

Integrated LED: No

Software upgradable: When connected to Hue bridge

Light Color: Warm white

Color(s): Metal

Type of light source: LED

IP rating: IP20

